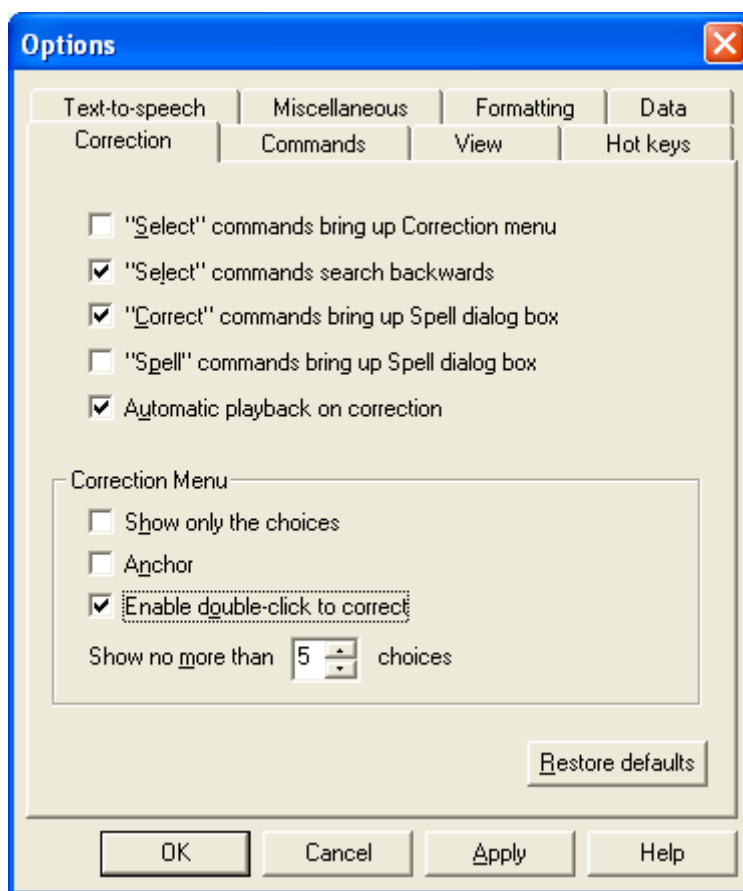


Lesson 3a: Correcting recognition errors

Objective: In this lesson, you learn how to make corrections when the software does not transcribe your speech correctly.

=>**Step 1:** Set the Correction Options as follows:

Deselect the check box ‘**Select Commands bring up Quick Correct**’ and select the other boxes as shown below.



=>**Step 2:** Dictate the following text with punctuation:

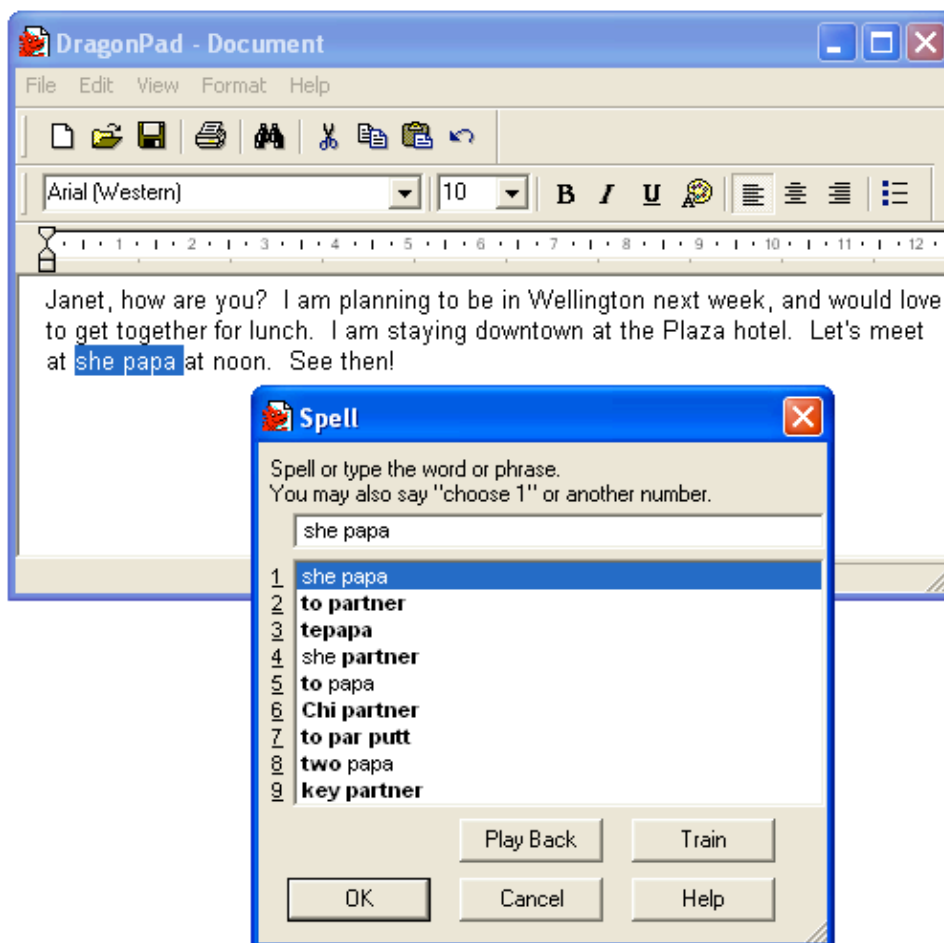
“Janet, how are you? I am planning to be in Wellington next week, and would love to get together for lunch. I am staying downtown at the Plaza Hotel. Let’s meet at Te Papa at noon. See you then!”

=>**Step 3:** Using the ‘**Select**’ command, select text that *Dragon NaturallySpeaking* misrecognized. (If *Dragon NaturallySpeaking* did not make any misrecognitions, continue dictating until it does.)

For example, say *select she papa* (if *Dragon NaturallySpeaking* typed “ she papa ” when you said *Te Papa*).

=>**Step 4:** Say *correct that*

The ‘**Spell**’ box pops up to show you the most likely matches for the misrecognized word and you hear your voice played back:



You could say *choose 3*, if the 3rd choice had the correct words (in this case it's not quite right) and this would do a “passive correction” on your words.

? **Note:** In the ‘**Spell**’ dialog box, you can say: